

Allcare Revised Shelf Edge Labels

There are now 2 different sets of SEL's

There is the original SEL and now a new WAS price SEL

The system will automatically sort these for you, it separates the two by checking if there's a WAS price attached to a product. These labels will come out with the WAS price and the amount saved on the right of the label. The WAS prices will be pushed from Allcare Head office.

McLernon's will dial in and set these up for you.

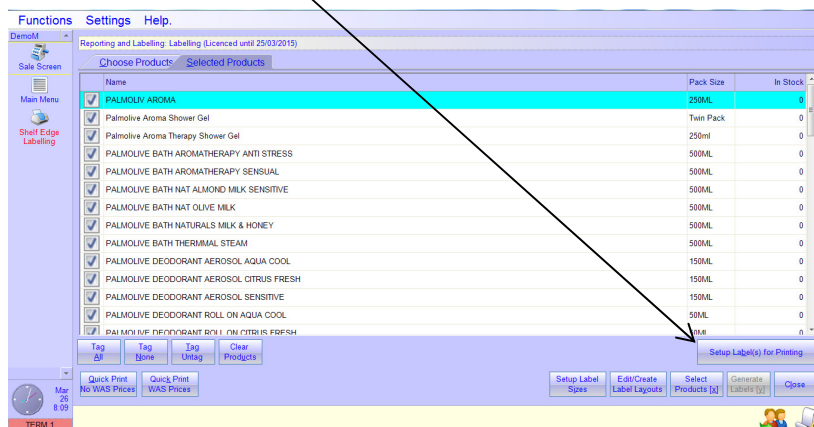
To print your labels

Main Menu>Reporting & Labelling>Labelling

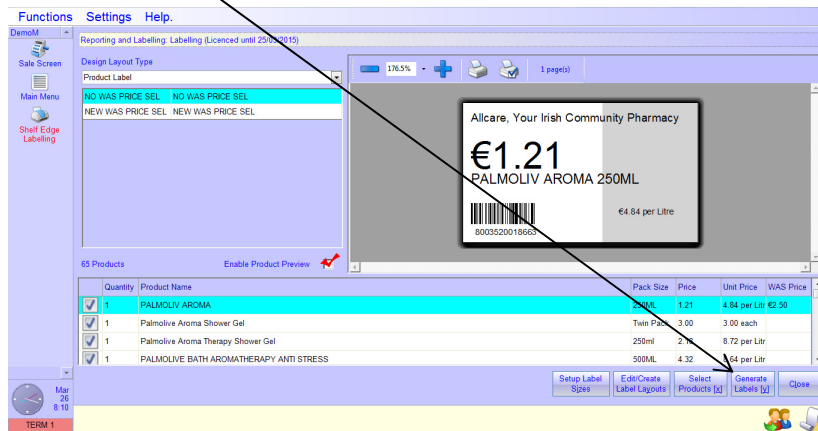
The option of Head office/ Local / Both will show

Click on Both, these will include all the labels you have generated from your shop system and all the labels being pushed to store from Head office

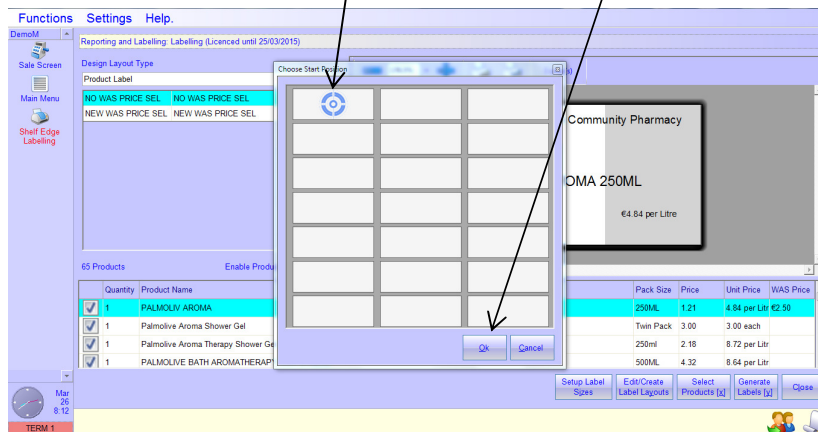
Click on Set up labels for Printing as normal



Then Generate Labels as normal



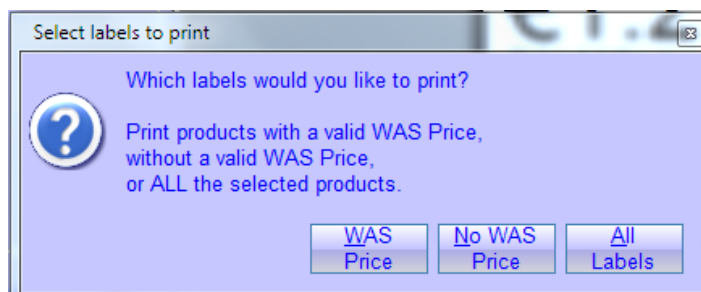
Select the position to start printing and OK



The following window will appear

This is the only new section of printing SEL's

WAS Price are the new labels- there will be new paper at a later date with a red strip to show off the save amounts but for now print them on the white SEL paper



Put the red banded paper in and select WAS Price

Once all are printed put in the plain white paper and select No Was Price

If in the future you print the WAS price labels on plain white paper and you have cleared the labels before you realise, you can re-queue only Headoffice labels.

Please see the Re-queuing Shelf Edge Labels document